



Ark Oval Primary Academy Rules **within School** **Code of Conduct**

- Arrive at school by 8:15-8:45 and make every effort to attend every day.
- Greet all adults with eye contact and with a good morning / afternoon.
- Wear the correct uniform smartly throughout the day.
- Move around the school safely, calmly and with hushed voices.
- Exhibit STAR behaviour – Sit up straight, Track the speaker, Ask and answer questions, Respect others by waiting
- Be polite, kind and respectful to all children and adults.
- Respect the views of others.
- Respect other students, their work and belongings.
- Be an active learner by engaging with the activities set by the teacher.
- Maximise learning time by working at a steady pace to the best of your abilities.
- Follow instructions respectfully and promptly.
- Be considerate of those around you by adjusting the volume of your voice accordingly.
- Be silent when requested and take turns to listen and speak.
- Show respect for own learning and that of others.
- Work independently unless asked otherwise.
- Ask for help only when needed.
- Explain learning to help and support classmates during collaborative activities.
- Put away anything not required for the lesson.
- Maintain concentration by avoiding all distractions.
- Follow established school routines (e.g. lining up for lunch, appropriate behaviour in the dining hall, requesting and going to the toilet etc.)
- If spoken to regarding inappropriate behaviour be gracious by maintaining positive body language and changing conduct.
- Always complete homework on time and to an excellent standard.
- If absent from school / fallen behind, please catch up with learning.
- Do not bring chewing gum to school and only eat at designated times.



Ark Oval Primary Academy Rules

The School & the Local Community

Code of Conduct

In the academy and the local community, children will do whatever it takes to help create a safe academy and local community which respects the rights of others.


- Listen to all members of staff and follow instructions respectfully and promptly.
- Be polite, kind and respectful to all children and adults at all times (never insult, undermine or swear at anyone).
- Discourage conflict between other students
- Walk in single file lines around the school. Used hushed voices and look where you are going.
- Go and return to classrooms, learning spaces or toilets sensibly and promptly and with adult permission.
- Only leave school when dismissed by name by the teacher.
- Stay with Parent / Carer and make way home in an orderly and responsible way.
- Show respect to members of our community including peers, staff, parents, transport staff and members of the public by speaking politely and with consideration.
- Show respect to others while on public transport by using polite, quiet voices.
- Show respect for the local community by obeying shop rules, never dropping litter, spitting, defacing or trespassing on private property. Each child to acknowledge they are an ambassador for the academy.
- Use the Internet, mobile and computer devices safely and in accordance with UK child protection laws.
- Understand that there will be consequences if the Code of Conduct is not observed.

Ark Oval Primary Academy staff focus and promote effective positive behavior by:

- Having a consistent approach.
- Modelling desirable behaviour.
- Using the Good to be Green behaviour management system.
- Praising, rewarding and showcasing children who are doing the right thing.
- Using non-verbal signals.
- Using private correction.
- Using anonymous group correction.
- Using 5 Ways to Stop and 5 Ways to Praise.
- Thanking children for compliance, positive attitudes and dispositions.
- Addressing the behaviour not the child.
- Reminding children the incentives, and only consequences when necessary.

Positive Incentives


Incentives - New!







Incentives

- *Good to be Green*
- *Star of the Day*
- *Class Captain*
- *House Points*
- *Certificate of Achievement*
- *Going the Extra Mile*
- *5 ways to praise*
- *Golden Time*









- *Good to be Green*
- *Star of the Day*: one child is chosen by their teacher based on exemplary behavior or learning.
- *Class Captain*: children are nominated by their peers for demonstrating the values of the school.
- *House Points*: all children are allocated to a house and earn points for their house by high effort, good behavior and good learning.
- *Certificate of Achievement*: 5 children in the year group are nominated to receive a certificate for demonstrating the values of Be Brave, Be Honest, Be Resilient, Be Respectful, and Aim High.
- *Going the Extra Mile* – given to children who consistently do the right thing, try their best or produce exemplary learning.
- *5 ways to praise*: teachers use positive language and positive celebrations.
- *Golden Time*: Given once a week on a Friday.

Good to be Green

We have a new behaviour management system called Good to be Green. This has replaced the Classroom Dojo programme.



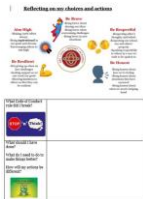
If a child demonstrates positive behaviours then they stay on Green. Teachers focus on, and praise, children who are doing the right thing.

If a child is not doing the right thing they have:

- A Verbal reminder
- Followed by one Yellow Card = 5 minutes off play time.
- Then a Double Yellow Card = 10 minutes off play time
- Finally a Red Card = Detention during Golden Time. (*Children have the opportunity to "earn back" their Golden Time if they receive a Going the Extra Mile Certificate*).

If a child receives more than one Red Card in a week they will have a Pupil Check in with a member of the Pastoral Team. For KS2 only, in addition to the check in the child will receive an after-school detention. These take place on Tuesdays 15:30-16:00 with a member of the Senior Leadership Team.

When a child receives a Yellow / Double Yellow / Red Card, it is placed in front of their Green Card. As soon as the child demonstrates good behaviour their Green Card is moved back to the front. The idea is to keep them on the green or move them back to green as quickly as possible so that the focus is on their positive behaviour and choices.



When a child receives a Yellow / Double Yellow / Red Card the class teacher will send home a Good to be Green Parent Communication form. The teacher will tick the card that they have received and circle / highlight the reason. Teachers will only speak to parents regarding Red Cards, and this will be at the end of the day or by phone.

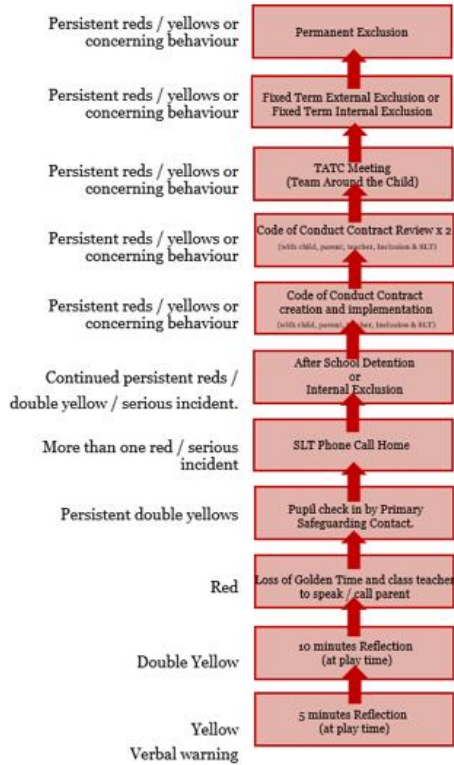
At the end of the week teachers log cards on an electronic database system so that behaviour can be tracked and supported accordingly (see below for overview of behaviours and process of escalation).

Green & House Points Demonstration of effort, values, and characteristics of learning.	Yellow Conduct not in line with school culture, ethos and values.	Red Conduct not in line with school culture, ethos and values.
<ul style="list-style-type: none"> • Demonstrate our values (Be Brave, Be Resilient, Be Respectful, Be Honest, Aim High) • Demonstrate the characteristics of Learning (Exploring, Active Learning, Creating & Critical Thinking) • Actively participate • Wear correct uniform • Show enthusiasm • Positive attitude with new tasks/challenges • Ask questions to deepen understanding. • Complete tasks to the best of your abilities. • Polite and kind to others • Show appreciation for others • Shows initiative • Reflect and improve learning / behavior independently • Follow instructions promptly and diligently • Maximise learning time • Maintain concentration • Respond constructively to feedback. • Takes turns • Collaborates with others cooperatively. • Show empathy and understanding • Go above and beyond what has been asked. 	<ul style="list-style-type: none"> • Talking over the teacher or other children • Calling out answers / interrupting • Not following instructions • Not listening • Wasting time during transitions / lessons • Breaking class rules • Fiddling with equipment • Off task behaviour • Not working independently during an independent task. • Disrespectful behaviour • Inappropriate language • Disrespecting property • Not being in the correct place • Not lining up correctly • Tantrums • Not respecting the personal space of others • Play fighting • Eating sweets /chewing gum 	<ul style="list-style-type: none"> • Leaving the classroom without permission • Shouting at an adult • Physical aggression • Physical attack (including pushing, kicking, punching) • Threats • Swearing • Racism / homophobic / discriminatory language • Fighting • Spitting • Bullying • Stealing • Vandalism/damage to school property • Intentional breach of COVID safety measures. <p><u>Exclusion</u></p> <ul style="list-style-type: none"> • Persistent refusal to follow the Academy rules and expectations / defiance to instructions / refusal to comply • Profuse verbal aggression / swearing • Deliberate Physical violence • Derogatory and/or discriminatory verbal violence towards another student /staff • Racial/sexual/homophobic harassment • Bullying • Theft • Drug abuse or possession of drugs or the use of any illicit substances or materials(including pornography) • Graffiti or serious property damage • Breach of Covid safety measures on purpose. <p><u>Permanent Exclusion</u></p> <ul style="list-style-type: none"> • Carrying an offensive weapon • Physical violence (pupil / staff) • Arson • Extortion • Drug-related activity linked to the supply of drugs • Persistent refusal to follow the Academy rules and expectations • Persistent fixed term exclusions • Criminal behaviour • Serious violence/assault • Abuse of any kind • Serious threats

Code of Conduct procedure for escalation



KS1



KS2

